



April 17-June 1, 2025

FILAMENTS

Fiber Arts in El Dorado County



FILAMENTS: Fiber Arts in El Dorado County

Weaving is one of the oldest forms of art and has been present in many cultures for thousands of years. It is interwoven within each culture and inseparable from the communities that have developed their particular craft. From the story of the three Fates in Greek mythology, Grandmother Spider in the Hopi tradition, or the Egyptian Goddess Neith, every culture has had a deity connected to weaving. The relationship between humans and the use of natural materials to create the essentials of life – clothing, basketry, blankets – is as fundamental as architecture, music, and poetry. Similarly, humans and animals have always coexisted and our dependency upon them for survival continues to the present.

The skills of weaving and spinning can be found as far back as Neolithic times, when women were buried with early design of spindles. Weaving was considered a sacred act and brought communities together because of its essential social component, vital to the lifeblood of those communities. Techniques and use of materials were passed down from generation to generation and we still have timeless techniques that are still used to this day.

Filaments at Switchboard Gallery is a vibrant celebration of both creativity and craftsmanship. Showcasing an array of works by talented local artists, this exhibition highlights the intricate beauty and diversity of fiber arts in the distant past and today. From traditional weaving and basketry to contemporary textile installations, each piece offers a unique perspective on this versatile medium.

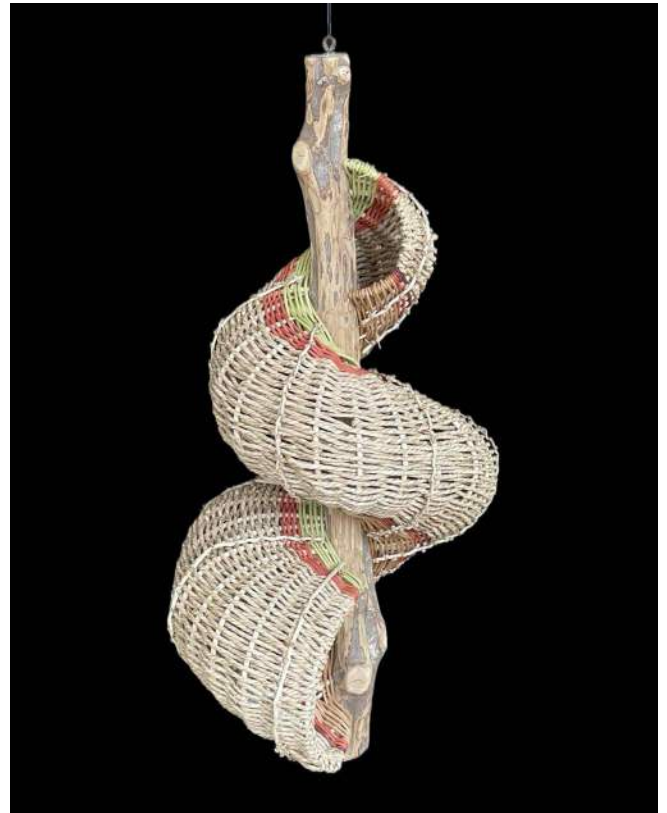
This exhibition is an intersection of both tradition and innovation. Visitors will have the opportunity to explore how artists are pushing the boundaries of fiber art by incorporating a range of techniques, materials, and concepts to create dynamic and original works. Many of the artists even raise their own animals locally and have sheared and spun what is now featured in the gallery. The fiber arts are alive and thriving here in El Dorado County.

In an age when most textiles are created by machines, and hand-spun works of art are becoming less common, you may gain a greater appreciation of the artistry that goes into each piece. You are also invited to admire a wide range of devices and tools that have been used for centuries, that not only have historical value, but also contemporary relevance as they were utilized to create the artwork you see in this exhibition.

Loren Christofferson
April 2025



Annette Passalacqua. Woven Tulip Tapestry.



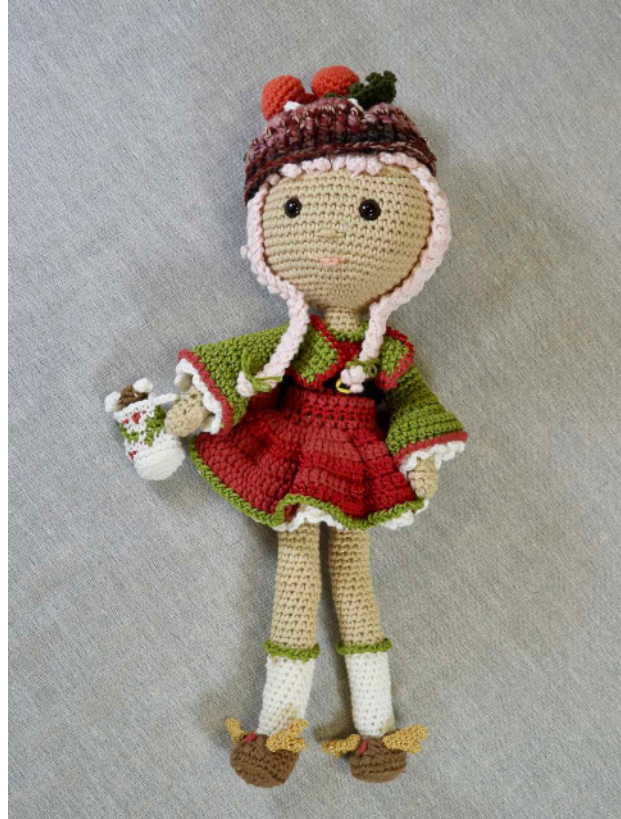
Joan Soth. Hanging Spiral Basket.
Sea Grass and Kind Palm Fronds.



Sharon Diehl. Crocheted Shallow Plate.
Mochila technique.



Susan Felton. Forest Saori Weaving.



Carol Coffey. *Christmas Carol*. Amigurumi Crochet.



Elizabeth Standeven. Felted Wool, Shed Deer Antler, and Copper Wire.



Christine Terbijhe. *Goth Bat Cowl*.
Alpaca and CVM Wool, QT Farm, Local Yarn.



Megan Trifiro. *Silk Scarf*. Silk, Merino Wool,
and Mohair.



Agnes Forshey. *Round basket*. Round Reed.



Beth Callahan. *Black Magic Shawl*. Alpaca and Silk.



Joan Soth. *Small Scultural Basket*. Round Reed and King Palm Fronds.



Beth Callahan. *Scottish Thistles*. Commercial merino fingering weight yarn, commercial pattern.

33 different chart symbols; six different cable stitches plus three-stitch cables with yarn-overs; six different color-coded stitch sequences for which there are no names, just descriptions; six different charts; and 554 individually seated beads.



Beth Callahan. *A Year of Gnomes*. Knitting, Needle-Felt, Embroidery.



Nettie Fox. *Basket*. Long Leaf Pine Needles, Gourd Bottom, Waxed Linen, Glass Beads, and Sequoia Cone.



Carol Coffey. Filet Crochet.



Sharon Diehl. *Crocheted Purse*. Mochila Crochet Technique With Inkle Woven Strap.



Sharon Diehl. *Sheep Caddy*. Wet and Needle Felt.



Devon Stewart. *Plaid Pillow*.



Andrea Jimenez. *Dream Surrealism*. Colored Pencil.



Jordan Tanaka. Handspun Yarn Skein.



Jordan Tanaka. Handspun Yarn Skein.



Anastassia Spitzer. *Colorful Cacti For Schmoopy/Learning From the Ground Up (WIP)*. Crochet Blanket.



Devon Stewart. Game Board.



Mary Jane Trifiro. Brain Coral. Wet Felted Wool, and Beads.



Sigrid Benson. *Cenerentola*. Cotton, Quebracho Rojo, Black Walnut.



Beth Callahan. *Counting Sheep*. Designed, Handspun, Handknit, Crochet, and Embroidered.

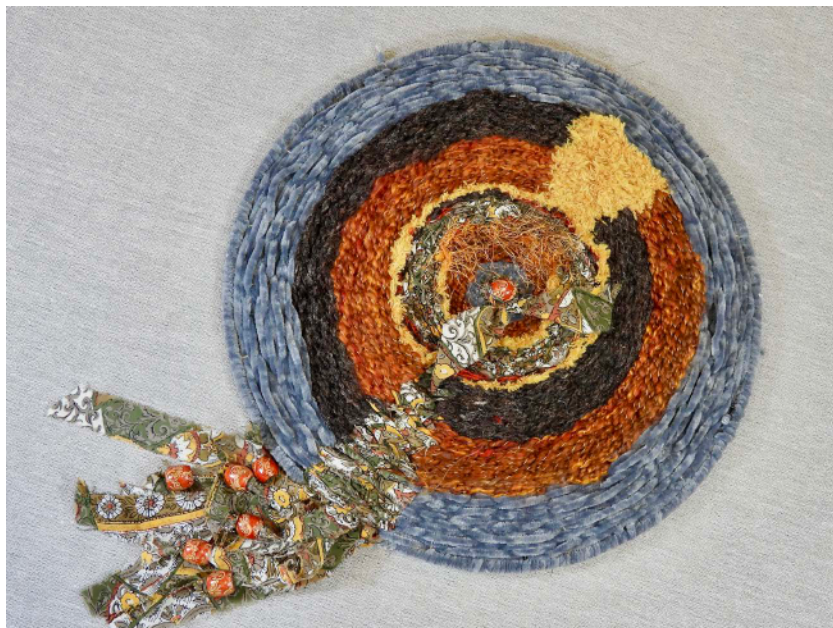
Fiber from 24 breeds of endangered American Heritage Sheep identified by the American Livestock Conservancy.



Carol Coffey. *Wings Into Spring*. Filet Crochet.



Susan Kerhoulas. *Asymmetrical Poncho*. Needle Felt, Embroidery,.



Donna Nelson. *Message*. Woven Textile.



Agnes Forshey. *Pocket Book Purse*. Flat Reed and Cane.



Nettie Fox. *Deer Antler Rib Basket*. Dyed and Natural Round Reed Seagrass.



Elizabeth Standeven. *Felted Pumpkin*. Wool, Wool Yarn, and Synthetic Yarn.



Donna Nelson. Needle Felted Textile.



Susan Felton. Coastal Saori Weaving.



Mary Jane Trifiro. *Anemone*. Wet Felted Wool and Beads



Claire Romelfanger.
Knitting.



Beth Callahan. *A Year of Gnomes*. Knitting, Needle-Felt, Embroidery.



Arts and Culture El Dorado's mission to promote, connect, and empower arts and culture throughout the county is achieved by targeted programs and services, a vibrant gallery exhibition series, and a focus on initiatives which support and sustain the cultural life of the region.

STAFF

Terry LeMoncheck, Executive Director
Loren Christofferson, Administrative Coordinator
Jordan Hyatt-Miller, Program Manager
Marya Osucha, Exhibitions Curator and Special Projects Manager
Nicki Bennett, Public Art Coordinator
Gemma Benton, Gallery Attendant

SUPPORT THE ARTS IN EL DORADO COUNTY

**Visit ArtsAndCultureEIDorado.org
to make a tax-deductible contribution.
Thank you!**



SPECIAL THANKS

Sharon Diehl
Elizabeth Standeven
The Hangtown Fibers Guild
Boeger Winery

Switchboard Gallery is supported in part by the California Arts Council,
El Dorado County, the City of Placerville, and our generous patrons.



Cover and back cover art by Susan Felton.

Guild Fiber Animal Farms in El Dorado County



SLEEPY HALLOW
-3 ALPACA

SMOKEY RIDGE RANCH
-20 BABY DOLL SHEEP

HIDDEN OAK FARMS
-35 SHETLAND SHEEP
-3 CASHMERE GOATS

MARTIN FIBER FARM
-10 SHEEP (FINN AND CALIFORNIA RED)
-6 ALPACA

BLUE BARN FARM
-WHITE AND PUREBRED MERINO SHEEP
-CASHMERE GOATS
-90+ ANIMALS TOTAL

QT FARM
-ALPACA
-MORINO
-CVM
-WENSLEYDALE AND SOUTHDOWN SHEEP
-CASHMERE GOATS
-1 GUINACCO (WILD LLAMA)
-70 ANIMALS TOTAL



