

# DOWNTOWN PLACERVILLE CULTURAL DISTRICT

CREATE  
A  
LEGACY  
FOR  
GENERATIONS  
TO  
COME



arts &  
culture  
EL DORADO

HISTORIC  
BELL TOWER  
MONUMENT  
USE BY

# DOWNTOWN PLACERVILLE CULTURAL DISTRICT

Arts and Culture El Dorado proposes to repurpose several beautiful civic treasures on Main Street in downtown Placerville (Confidence Hall and Emigrant Jane, the old Post Office and the old Telephone Company building) as cultural spaces for arts and performance, community resources, educational space, and many other possibilities that serve our community – both residents and visitors alike – while retaining their historic character, so important to Main Street and the history of Placerville.

## **THIS WILL CREATE A DEDICATED SPACE FOR PROJECTS SUCH AS...**

- Art installations
- Temporary “pop-up” arts projects
- Student works
- Play readings and poetry readings
- Live music
- Film screenings
- Book signings
- Workshops, conferences, lectures
- Performances
- Ag in the Classroom activities
- Culinary arts classes
- And other activities

## **ELEMENTS OF PROJECT:**

- Gallery and Performance Space
- Arts Flex Space
- Artist Studio Apartments
- Cultural Community Center
- Arts and Agriculture Building
- Arts and Culture El Dorado Offices

## **OUR PRIORITIES:**

- Preservation of historic elements of the buildings.
- Relevant use as a vibrant presence that will enhance Downtown and serve the Placerville community.
- Sustainability in implementation, operations and maintenance.

## **BACKGROUND OF PROJECT:**

In April 2017, Arts and Culture completed a Cultural Master Plan for El Dorado County. This plan contained 22 recommendations and proposed partnerships, resulting from an 18-month process that included review of 25 reports, maps, plans and other foundational documents, over 100 interviews, and extensive research into the cultural assets in El Dorado County. One recommendation from the Cultural Master Plan was to consider a potential Cultural District for downtown Placerville, and feasibility studies were undertaken.

The plans and operating program were developed after extensive architectural review, including structural, mechanical, plumbing and fire suppression, electrical, and site design.

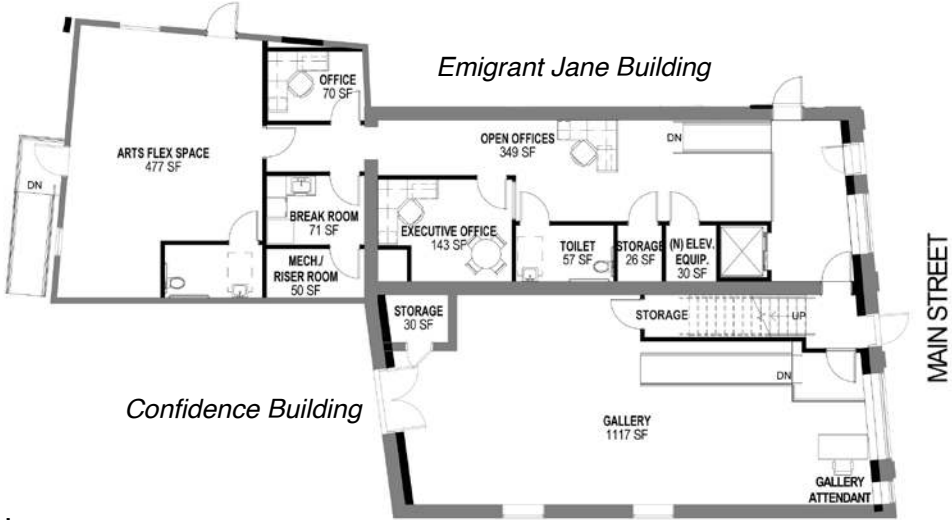
## **COST:**

Total projected costs are approximately \$6 million, raised by Arts and Culture El Dorado from institutional and individual funders. Capital campaign timeline is projected to be two years, with the build timeframe at about one year.

## **LEARN MORE:**

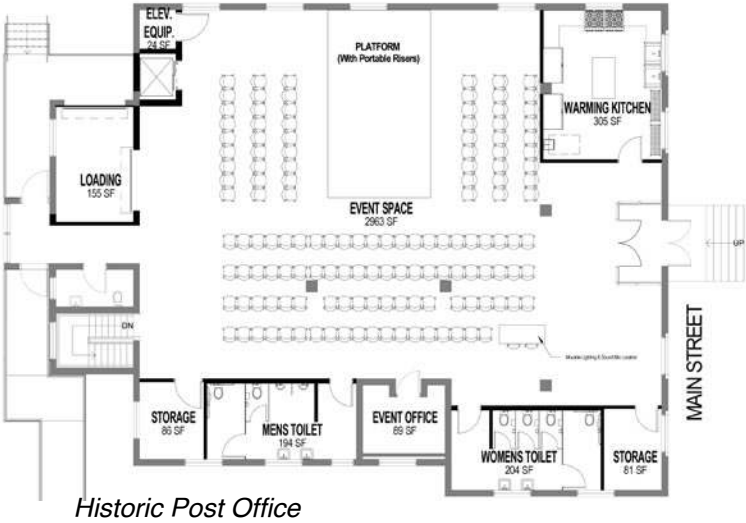
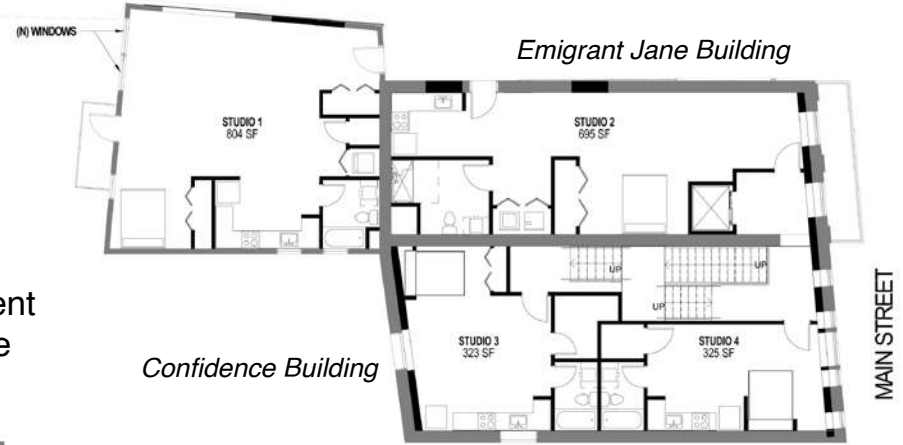
Visit [ArtsAndCultureEIDorado.org](http://ArtsAndCultureEIDorado.org) for more details about the Cultural District.

The ground floor of Confidence will become a dedicated gallery and performance space. A rotating exhibition series will celebrate the unique culture of El Dorado County. The space will also house small performances, music events, and other community activities designed to enliven Downtown Placerville. The ground floor of Emigrant Jane will serve as offices for Arts and Culture El Dorado.

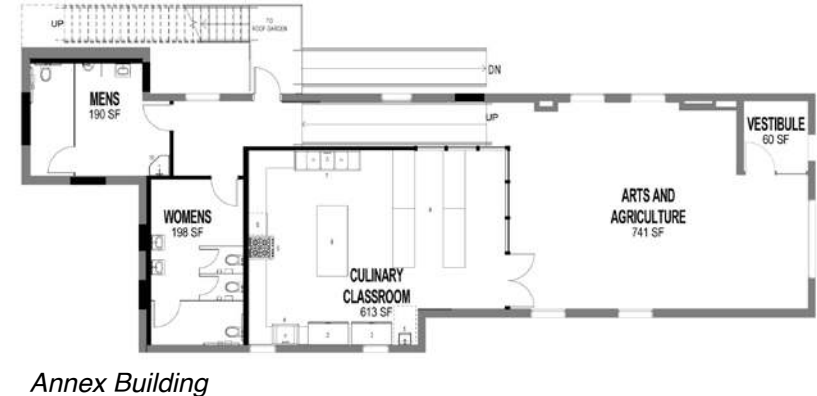


An Arts Flex Space will serve the cultural community and also other nonprofits and community groups. Activities will include workshops, classes, meetings, auditions, readings, book clubs, and many other possibilities.

The second floors of Confidence and Jane will become artist studio apartments. The rent from these apartments will create a revenue stream for building maintenance.



The historic Post Office building (formerly the D.A. offices) will be converted to a Community Cultural Center. Among the many proposed uses are winter farmers market, high school proms, cabaret and social dancing, lectures, conferences, workshops, banquets, film series, small performances, and many other community opportunities.



The small Annex Building east of the Post Office (the old Telephone Company building) will become a space for the intersection of art and agriculture. Amenities will include a demonstration kitchen and rooftop garden, and the space is seen as a gateway for agritourism and an educational resource for the community.

# HISTORY OF BUILDINGS

## CONFIDENCE HALL

In 1857, a group of volunteers solicited the funds to purchase a used fire engine from Sacramento's Engine Company No. 1. Finding it impossible to remove its deeply engraved title, "Confidence Engine No. 1", the Mountaineer Engine Company was renamed to match the new engine, and the new Firehouse was erected in 1860. In 1906, the city of Placerville established the first public library in El Dorado County, which took up residence on the upper floor of Confidence Hall until it was relocated in 1947.

## EMIGRANT JANE STUART BUILDING

As the story is told, Emigrant Jane Stuart single-handedly drove a herd of horses from the Midwest and arrived in Placerville in mid-1860. She sold the herd and used the proceeds to buy the parcel of land next to the Firehouse, where she built a two-story building in 1862.

Placerville City Hall occupied the buildings from 1902 to 2005.

## HISTORIC POST OFFICE

The historic Post Office building was constructed in 1940. In addition to the Post Office, the new building has housed the IRS, Department of Agriculture, and office of Plant Quarantine. In keeping with Federal Works Agency policy to decorate public buildings, San Francisco artist Tom Lewis was commissioned to execute a mural which still stands in the building today. The 4-by-14-foot oil painting depicts a forestry conservation theme, and is listed in the National Fine Arts Inventory in Washington, D.C.

In 1969 a new post office was built, and the District Attorney moved in to the building. Due to the structure falling into disrepair the DA's office was moved in December 2017.

## OLD TELEPHONE COMPANY BUILDING

What is now known as the Annex building used to house the Telephone Company and was where Placerville residents would go to pay their bills, request phone line hookups or get questions answered about their phone services. When the District Attorney outgrew its location in the historic Post Office, several small offices were made within the building next door to create the DA Annex.

# ABOUT US

Arts & Culture El Dorado's mission to promote, connect, and empower arts and culture throughout the county is achieved by targeted programs and services, a vibrant gallery exhibition series, and a focus on initiatives which support and sustain the cultural life of the region.

**Mailing address:** P.O Box 2400  
Placerville, CA 95667

**Office address:** 489 Main Street  
Placerville, CA 95667

**Website:** [ArtsAndCultureElDorado.org](http://ArtsAndCultureElDorado.org) **Phone:** (530) 295-3496 **E-mail:** [Info@ArtsAndCultureElDorado.org](mailto:Info@ArtsAndCultureElDorado.org)